



Parents' Guide to SEND at Alt Academy

At Alt Academy we ensure that all pupils make good progress. We are inclusive in meeting the needs of pupils with Special Educational Needs and Disabilities in adherence with the Code of Practice.

The four broad 'areas of need' are:

- **Communication and Interaction**
- **Cognition and Learning**
- **Social, Emotional and Mental Health Difficulties**
- **Sensory and /or Physical Needs.**



A child or young person has special educational needs if he or she has a learning difficulty or disability which calls for special educational provision to be made for him or her. A learning difficulty or disability is a significantly greater difficulty in learning than the majority of others of the same age. Special educational provision means educational or training provision that is additional to, or different from, that made generally for others of the same age in a mainstream setting in England.... health care provision or social care provision which educates or trains a child or young person is to be treated as special educational provision. (Code of Practice, 2014)

What can we offer for children with SEND?

At Alt Academy, we embrace every child as different and unique, and, acknowledge that the educational needs of every child are therefore different. Teaching and learning is adapted to meet the needs of every child. Sequences of lessons are engaging and exciting, using a variety of strategies and scaffolds to support the needs of every child

Who can I talk to about my child's needs?

The class teacher

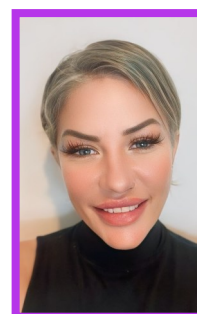
Responsible for :

- The progress and development of every pupil in their class through QFT and high-quality provision.
- Working closely with any teaching assistants or specialist staff to plan and assess the impact of support and interventions and how they can be linked to classroom teaching.
- Working with the SENDCo to review the progress and development of each pupil and ensuring appropriate provision and intervention.
- Ensuring smooth transition for pupils with SEND through liaison with teacher, parents and SENDCo
- Ensuring they follow the SEND policy.
- Be held accountable for progress and provision of SEND pupils through progress meetings and performance management system.
- Developing effective relationships with parents and keeping parents informed of pupil progress.
- Working with the SENDCo to identify their own training needs around SEND.

Trust Leader for Mainstream SEND– Alt & Northmoor SENDCo: Miss Tamsin Wood

Responsible for

- Have day-to-day responsibility for the operation of this SEND policy and the co-ordination of specific provision made to support individual pupils with SEND, including those who have EHCPs.
- Provide professional guidance to colleagues and work with staff, parents, and other agencies to ensure that pupils with SEND receive appropriate support and high-quality teaching
- Advise on the graduated approach to providing SEND support.
- Monitor, review Individual plans and EHCPs on a regular basis.
- Advise on the deployment of the academy's delegated budget and other resources to meet pupils' needs effectively
- Be the point of contact for external agencies, especially the local authority and its support services
- Liaise with potential next providers of education/ new staff to ensure pupils and their parents are informed about options and a smooth transition is planned.
- Work with the Principal and Board of Trustees to ensure that the academy meets its responsibilities under the Equality Act 2010 regarding reasonable adjustments and access arrangements.
- Ensure the academy maintains an up-to-date register and records for all children with SEND.
- Arrange appropriate whole school and individual SEND training and surgery sessions.
- Ensure efficient deployment of TAs to support SEND pupils.
- To arrange SEND staff professional development meetings, to include outside agencies where appropriate.



Miss Wood works across the Academies within The Harmony Trust supporting the Trust SENDCos and is based at Alt. She works at Alt on Monday, Wednesday and Friday. If you wish to speak with her please ask at the office to arrange a meeting.

What are the different levels of support my child can get?

The SENDCO and class teacher discuss new SEND concerns at termly SEND staff surgeries. Children are **monitored** while support, scaffolding and specific strategies are used to facilitate learning. After this, an action plan can be produced and your child's levels of support increases- these children are known as **targeted children**. Children who have support from professionals through referrals by school or other agencies are known as **Specialist support** as their targets are tailored to their diagnosis or using advice from professionals. Some children require further support and an Education Health Care Plan (**EHCP**) can be applied for from the Local authority.

If you have any questions about the level of support your child gets please speak to the SENDCO.

What support do we have for you as a parent of a child with SEND?

The class teacher is regularly available to discuss your child's progress or any concerns you may have and to share information about what is working well at home and school, so that similar strategies can be used.

- The SENDCO is available to meet with you to discuss your child's progress or concerns/worries you may have.
- All information from outside professionals can be discussed with you with the agency involved, or where this is not possible, in a report. The SENDCO can support you to understand these reports.



If you have any further questions or concerns about your child then please make an appointment to speak to the SENDCO.

What are IEP Targets?

Individual education plan targets are **small, simple steps to support your child** in school. Your child will have a few targets that all staff working with your child know. Teachers and Teaching assistants know how they can help your child achieve those targets and will support your child to reach them.

How are the IEP Targets reviewed?

Individual education plan targets are reviewed every term by your child's teacher and the SENDCO in a SEND staff surgery. Recommendations from professionals are used to support target setting and progress is measured before the meeting to ensure the next steps for your child are reflected in the new targets for the next term. Teachers and the SENDCO will share these targets with you throughout the year.



How can you help your child with their targets at home?

The SENDCO or class teacher can give you a copy of your child's IEP targets. They can offer you support and advice around how you can help your child meet these targets at home.

What is the Local Offer?

The Children and Families Bill came into effect from September 2014. Local Authorities and Schools/Academies are required to publish and keep under review information about services they expect to be available for the children and young people with Special Educational Needs (SEN) aged 0-25. This is the 'Local Offer'.

The intention of the Local Offer is to improve choice and transparency for families. It is also an important resource for parents in understanding the range of services and provision in the local area.



At Northmoor we utilise the LA Local Offer to meet the needs of pupils with SEND as determined by Academy policy and the provision that the school is able to meet, working in partnership with the Local Authority, external agencies and partners in Education, Health and Social Care.

Oldham Local offer: https://www.oldham.gov.uk/info/201097/your_local_offer

The Family Information Service (FIS) provides free, impartial, up-to-date information to support parents/carers with children and young people aged 0-19 years (up to age 25 with a disability or additional need) and prospective parents www.oldham.gov.uk/fis

POINT is a registered charity that was established in 2010 by 4 parents and carers of children and young people with additional needs and disabilities. Their driving mission is to ensure that parents and carers have access to meaningful information, advice, and peer support, whilst enabling their voices to be heard to drive change and shape better services. POINT now delivers a wide range of Information, Advice and Support Services for, and with, families of children and young people with Special Educational Needs and Disabilities (SEND). <https://www.point-send.co.uk/what-we-do>



SENDIASS is short for Special Educational Needs and Disability (SEND) Information, Advice Support Service (IASS) and exists to help parents and carers of children who have, or may have, special educational needs and/or disabilities; and children and young people themselves, in matters relating to their Education, Health or Social Care provision.

Their support services are tailored to your individual needs and are both personal and confidential. They can offer you:

- *Independent information about Special Educational Needs & Disability (SEND).*
- *Advice about working with those involved with you, your child or young person.*
- *Information about local support networks.*
- *Support to arrange Mediation and Disagreement Resolution.*
- *Support with SEND Tribunal claims.*
- *Opportunities to improve and shape services through our SEND IAS Steering Group.*

<https://www.point-send.co.uk/Pages/Category/oldham-sendiaass>