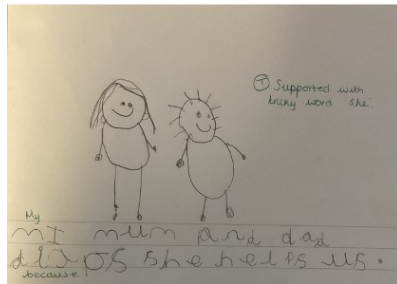
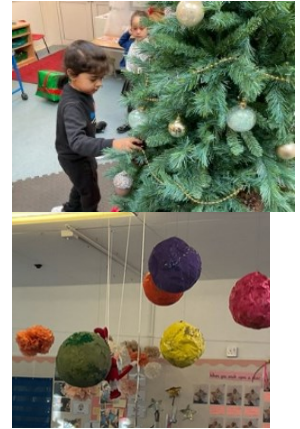
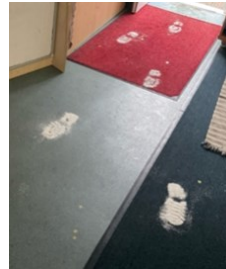


EYFS



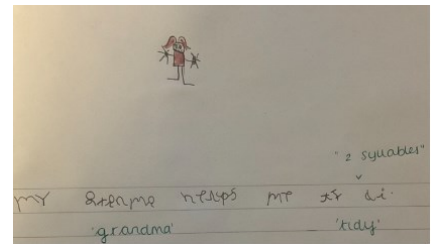
Ruby

Ruby class were surprised by a very cheeky Elf called Elvis in the classroom this week! This got us in the Christmas spirit, and we decorated the tree with our friends too.



Amber

This week we have been talking about people who inspire us and what makes them our heroes - we have been writing about what they do to help us.



KS1

Opal

This week in computing we have using TT Rockstars to answer times tables questions. We tried super hard and we are already improving.



Jade

This week in English, we have been learning about the heroic Malala, through the story of Malala's Magic Pencil. We have been using our acting skills to re-enact the diary entries we are going to write.



Pearl

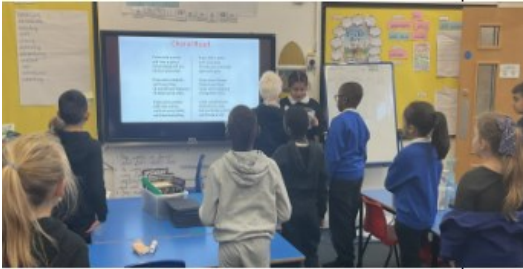
This week in Pearl class we have been working hard on building our friendships and learning how to recognise each other feeling and learning how to be empathetic.



Lower KS 2

Topaz

This week, Topaz class have been planning, writing a first draft, editing and then producing our amazing final draft of our non-chronological report. Our reports are all about Stone Age animals, we've learnt so many interesting facts!



Citrine

This week in Citrine we have been learning the poem If You Were A Carrot. The children have learned to recite the poem using dynamics to ensure it is entertaining and captures the emotions intended by the poet.



Emerald

This week year 3 and 4 came together to practise our ukulele and singing performance before our grown ups come to see us. We can't wait for you to see all of our hard work.

Upper KS2

Amethyst

This week in P.E, Amethyst have focused on team working skills. The children learnt how to send and receive whilst sneaking past their opponents.



Tanzanite

This week in science we have been looking at shadows and how they are formed. We started off practically using torches and objects to see how we can change shadows. We then looked at shadows caused by the sun as part of our work on Earth and space.

Sapphire

This week in PSHE, we have been learning about friendship. We have been learning and performing songs about trust and friendship in music.



Star of the Week

Well done to this weeks stars of the week.

Amber	Haniya	For a super improvement with her attitude to learning. Taking every-day as a learning opportunity nd loving every minute!
Ruby	Jesse	For trying hard in all his learning even when it is tricky!
Opal	Emily	For giving 100% and trying her best.
Jade	Arafath	For settling in so well in our school family and making new friends.
Pearl	Jaylon	For fantastic phonics and reading.
Topaz	Layla	For fantastic reading and amazing resilience during our assessment week.
Citrine	Kai	For showing courage and determination, particularly in our recent assessments but also in our learning time. Being brave has brought Kai success and pride in his achievements.
Emerald	Kyle	For his resilience in all of his learning this week. You should be very proud of all your progress.
Amethyst	Janikah	Settling into her new class really well.
Tanzanite	Kirsty	For demonstrating an amazing attitude to her learning even when presented with new challenges.
Sapphire	Mohsin	For hard work and perseverance this week.

Principal's Reading Champions: Zaviyan, Lakeisha, Runo, Kingsley, Alisha, Sofia, Livinia-Rose, Olly, Laaibah, Hannah, Jacob



Principal's Award: Carson Peacock- amazing progress and a fantastic attitude to learning.



The Word of the Week is
Pledge

The 10 Point Harmony Pledge

1. Be **safe, healthy and happy**
2. Be a **fundraiser**
3. Be a **performer**
4. Be an **eco-warrior**
5. Be **respectful**
6. Be a **volunteer**
7. Be **democratic**
8. Be an **adventurer**
9. Be an **expert learner**
10. Be **workwise**



Ukulele Performance

Calling all parents/carers of children in Topaz, Emerald or Citrine classes! Please come and watch our ukulele extravaganza on 14th December at 9:15am. Mr Wilson from Oldham Music Centre will be leading the children through some super Christmas singing, classes performing their ukulele skills and there is also a super solo singer to enjoy!



Number of late children this week

This week, we have had a huge number of children late to school. We know that it is extremely cold in the mornings, and it is still dark when children are coming to school however it is incredibly important that children are on time and ready to learn every single day.



This shows how much impact there is:

10 minutes late per day = 50 minutes per week. This is almost a whole lesson missed per week which would add up to over a day missed every half term. 50 minutes is more time than two phonics lessons in EYFS and KS1. All learning sessions are vital for our children to make the progress and development they need.

Please support us by getting up a little earlier and starting your journey to school a little sooner. It will make a huge difference for your child.

Nativity

Today is the final opportunity to collect your Nativity tickets from the school office. On Monday, tickets will be opened up again to those families who wanted to secure more than two. If you don't want to miss out, please call into the office to secure your seats.



Christmas Craft and Chatter



On the 12th & 14th December at 2pm we are having a Christmas Craft and Chatter event for our EYFS parents. This will involve a chance for social time with other parents & carers and making Christmas decorations, whilst enjoying Christmas treats and festive music.

Session 1 (Tuesday 12th) will be for Amber class parents/carers. Session (Thursday 14th) will be for Ruby class parents/carers. Please let Miss Greenwood know if you are planning on attending.



Programme of Coffee Morning Agenda 2023-24 Autumn 2

Coffee mornings will take place every Tuesday morning at 9:00am in the KS2 hall. Everyone is welcome to attend. Here is the agenda for this half term..... please come and join us!



Week Number	Date of Coffee Morning	Agenda
7	Tuesday 12 th December	Coffee chatter and natter!
8	Tuesday 19 th December	Review & party

Crossing Patrol

We are currently experiencing intermittent levels of school crossing patrol outside Alt Academy. This means, that there will be some sessions where there is not a crossing patrol on site. Whilst staff on duty can support a child crossing the road if they appear to be in danger, this support is not consistently available and is not to be relied upon. Please support your children to be safe on the crossing. If your child walks to and from school alone, please discuss road safety with them.



Football winners!

Our Year 3 & 4 Football Team (Archie, Addison, Mohammed, Junaid, Sahil, Faad, Hasan and Zohaib) attended Richmond Academy in the Harmony Trust tournament last night, in the pouring rain! They won against Westwood Academy 4-0, they beat Greenhill Academy 2-0 and lost the final game to Richmond 2-0. Alt Academy won the tournament on goal difference, and we are extremely proud of every member of the team!



Attendance



Overall attendance year to date – 93.2%

Weekly winners – Well done to: -

EYFS and KS1 – Opal 96.7%

KS2 – Citrine 97%

Our target is 96%



Christmas Calendar



12.12.23	14.00pm - 15.20pm Christmas Parent Workshop EYFS
14.12.23	14.00pm - 15.20pm Christmas Parent Workshop EYFS
14.12.23	Ukulele Showcase, 09:15 – Year 3 and 4 families welcome to attend.
18.12.23	Reception and KS1 Nativity performances, 09:15 and 14:00 (strictly ticketed event, 2 tickets per family).
18.12.23	Steel Pan & Glockenspiel Showcase, 10:30. Invited families will be informed in advance.
21.12.23	Christmas lunch.
22.12.23	Christmas jumper and party day. £1 per child donation (Year 6 fundraising opportunity).
22.12.23	Last day of term.

Any donations of treats for the party can be put in the boxes in the KS2 Hall.



UKeff Christmas & New Year Office Open Hours		
23 rd December	12-3pm	UKeff, 72 Yorkshire St, Oldham, OL1 1SR
25th December	Warm Food Hub	Oldham Chapel, Connaught St, Off Kings St Roundabout, Oldham, OL8 1EB
26th December	Closed	-----
27th to 29 th December	Normal office hours	UKeff, 72 Yorkshire St, Oldham OL1 1SR
30th December	12 – 3pm	UKeff, 72 Yorkshire St, Oldham OL1 1SR
1 st and 2 nd January 2024	Closed	-----

Who are UKeff? Read about UKeff [here](#).

This Christmas Half Term

SWIM CAMP

At Oldham Leisure Centre

10am - 2pm

Ages

8 - 11

Years

FREE*

*HAF code must be provided when booking

3rd January - 5th January

Book your space now by visiting the link in the email attached.

This camp will consist of 1.5 hours in the pool, 1.5 hour of play and 1 hour for lunch.

The Walt Disney Company's streaming service, Disney+ combines entertainment from the famous animation studio itself with Pixar, Star and National Geographic, plus the Marvel and Star Wars franchises. With access to the latest releases, Disney classics and original series, there's plenty of content to explore. While parents may have noted that adverts have now been introduced on some versions of the service, the platform is – unsurprisingly for a Disney product – designed to be appropriate for the whole family.

While Disney+ is predominantly family friendly, there are some movies and shows in its library which are aimed at an older audience: these may scare younger ones or contain themes or language that you'd rather your child wasn't exposed to. You could avoid such situations by enabling Junior Mode (see 'Adjust content settings', below) or specifying a content age rating for your child's profile.

With the option to view content on any internet-enabled device and a growing catalogue of movies, cartoons and documentaries, Disney+ can make managing screen time difficult. This could result in children binge watching content, distracting them from activities like homework or socialising. Too much screen time has also been shown to negatively impact mood, sleep patterns and weight.

Be especially cautious if you receive emails or text messages purporting to be from Disney+. There have been numerous reports of online scammers impersonating Disney+ staff in an attempt to gain access to subscribers' personal information. Disney+ states it will never email or call customers asking for their payment details, their private information or their password.

Disney+ has introduced a new subscription package - Disney+ Standard with Ads - which plays commercials before movies and during shows (like many TV channels). There are no adverts in Junior Mode, but profiles with a content rating of 6+ years will see ads appropriate for that age category. Adults who give consent will see personalised adverts based on their location and viewing history.

If adults don't set a PIN for their profile, children could access it and encounter content which isn't age appropriate. In the settings, Junior Mode has a toggle titled 'Kid-Proof Exit' which requires the user to read four words (numbers, spelled out) and enter them to switch profiles. For older children who can read, though, this isn't secure enough – so using a PIN for adult profiles is recommended.

Advice for Parents & Carers

When setting up an account, there's an option to create profiles in what's called Junior Mode. This generally covers material that's suitable for children up to age 6 and is therefore fairly limited. You can give older children a wider choice of viewing by building a standard profile, then going into the settings and choosing a content rating from one of the pre-set alternatives: 6+, 9+, 12+ or 14+.

Disney+ enables you to effectively lock profiles behind a four-digit PIN. In particular, some of the shows on the platform's Star content hub are far more oriented to adults (including several hard-hitting dramas from US networks), so protecting parents' or older siblings' profiles with a PIN will help to prevent younger children stumbling across material which isn't intended for them.

When a cartoon, show or movie finishes, Disney+ uses algorithms to identify content with similar themes, which it thinks your child will also enjoy. This suggestion will then automatically begin to play by default. There's an option to turn off this auto-play function in the profile settings, which will encourage your child to take a break from the screen and move on to a different activity.

When your child watches a movie or show on Disney+ for the first time, you may want to sit with them to ensure it's suitable. You could do the same when introducing them to older films that you haven't seen for years: your perception of what's appropriate has very probably changed, and some of the language and attitudes in movies from your own childhood may seem quite shocking today.

Dr Claire Sutherland is an online safety consultant, educator and researcher who has developed and implemented anti-bullying and cyber safety policies for schools. She has written various academic papers and carried out research for the Australian government comparing Internet use and sexting behaviour of young people in the UK, USA and Australia.



Source: https://www.disneyplus.com/esptv3=esp_article_content&sys_kb_id=1f08edd3dbcf49860f340c1980771 https://www.disneyplus.com/esptv3=esp_article_content&sys_kb_id=193eb61dbd441d30ff62ed3981930
https://www.disneyplus.com/esptv3=esp_article_content&sys_kb_id=96924b1dbd441d30ff62ed3981930 https://www.disneyplus.com/esptv3=esp_article_content&sys_kb_id=96924b1dbd441d30ff62ed3981930